

Standard Chain Link Fence

Must Conform to the Following Table:

[2224 FBC](#)

Address: _____

Fence Height: _____ FT Fence Length: _____ FT

***** IMPORTANT FOR USE AS A POOL BARRIER *****

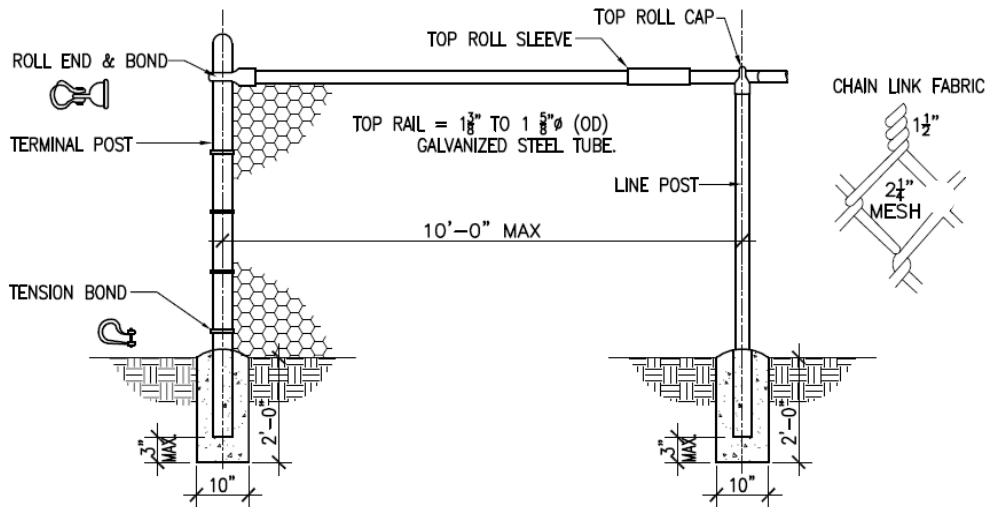
Outdoor swimming pools shall be provided with a barrier complying with Florida Building Code Section [454.2.17](#).

Access gates shall be equipped with a self-closing self-latching locking device located no less than 54 inches from the bottom of the gate. The device release mechanism shall be located on the pool side of the gate and so placed that it cannot be reached by a young child over the top or through any opening or gap. Gates that provide access to the swimming pool must open outward away from the pool.

The top of the barrier shall be at least 48 inches above grade measured on the side of the barrier which faces away from the swimming pool.

The maximum vertical clearance between grade and the bottom of the barrier shall be 2 inches measured on the side of the barrier which faces away from the swimming pool.

Maximum mesh size for chain link fences shall be a 2 1/4 inch square unless the fence is provided with slats fastened at the top or bottom which reduce the openings to no more than 1 3/4 inches.



CHAIN LINK FENCE MINIMUM REQUIREMENTS

Fence Height (ft)	Terminal Post Dimensions (in inches) (o.d. x wall thickness)	Line Post Dimensions (in inches) (o.d. x wall thickness)	Terminal Post Concrete Foundation Size (diameter x depth) (in inches)	Line Post Concrete Foundation Size (diameter x depth) (in inches)
Up to 4	2 3/8 x 0.042	1 5/8 x 0.047	10 x 24	8 x 24
Over 4 to 5	2 3/8 x 0.042	1 7/8 x 0.055	10 x 24	8 x 24
Over 5 to 6	2 3/8 x 0.042	1 7/8 x 0.065	10 x 24	8 x 24
Over 6 to 8	2 3/8 x 0.110	2 3/8 x 0.095	10 x 36	10 x 36
Over 8 to 10	2 7/8 x 0.110	2 3/8 x 0.130	12 x 40	10 x 40
Over 10 to 12	2 7/8 x 0.160	2 7/8 x 0.120	12 x 42	12 x 42

For SI: 1 inch = 25.4 mm.

NOTES:

- This table is applicable only to fences with unrestricted airflow.
- Fabric: 12 1/2 gauge minimum.
- Tension bands: Use one less than the height of the fence in feet evenly spaced.
- Fabric ties: Must be minimum the same gauge of the fabric.
- Fabric tie spacing on the top rail: Five ties between posts, evenly spaced.
- Fabric tie spacing on line posts: One less than height of the fence in feet, evenly spaced.
- Either top rail or top tension wire shall be used.
- Braces must be used at terminal posts if top tension wire is used instead of top rail.
- Post spacing: 10 foot (3 m) on center maximum.
- Posts shall be embedded to within 6 inches (152 mm) from the bottom of the foundation.
- In order to follow the contour of the land, the bottom of the fence may clear the contour of the ground by up to 5 inches (127 mm) without increasing table values to the next higher limit.