

# MIAMI BEACH

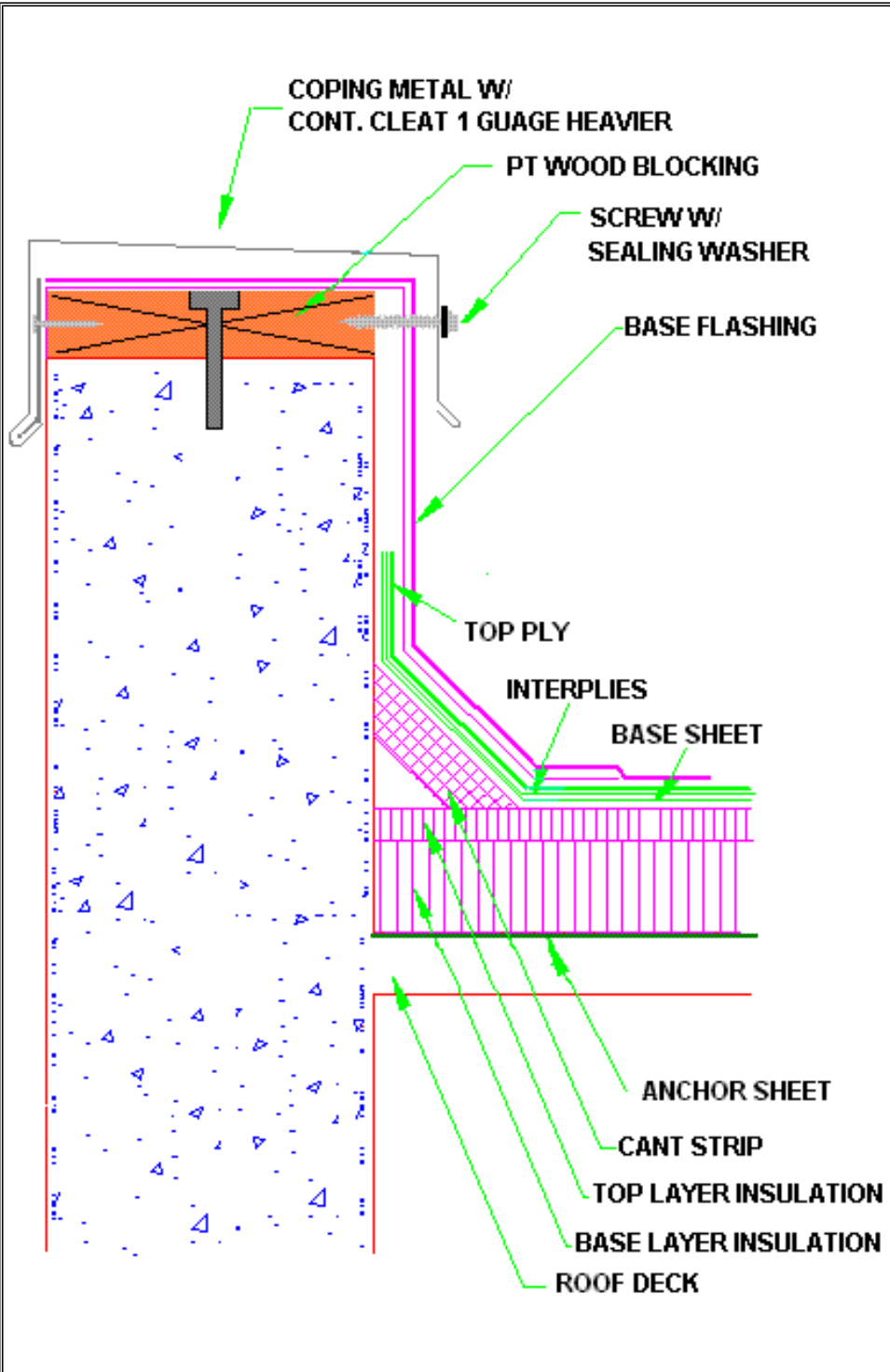
## City of Miami Beach HVHZ Electronic Roof Permit Form

### Illustrate Components Noted and Details as Applicable:

Woodblocking, Gutter, Edge Terminations/Stripping/Flashing, Continuous Cleat, Cant Strip, Base Flashing, Counterflashing, Coping, Etc.

**Indicate:** Mean Roof Height, Parapet Height, Height of Base Flashing, Component Material, Material Thickness, Fastener Type, Fastener Spacing

**Or:** Submit Manufacturers Details that Comply with RAS-111 and Chapter 16.



Parapet wall height:           ft.

Roof Mean Height:           ft.

Coping Metal:

Cleat:

Wood Nailer:

Wood Nailer Fastening:

Base Flashing:

Surfacing:

Top Ply:

Inter Ply Sheet:

Base Sheet:

Top Layer of Insulation:

Base Layer of Insulation:

Anchor Sheet:

Roof Deck Type: