



YOUR VOICE, IN ACTION!

Normandy Isle Traffic Calming Project

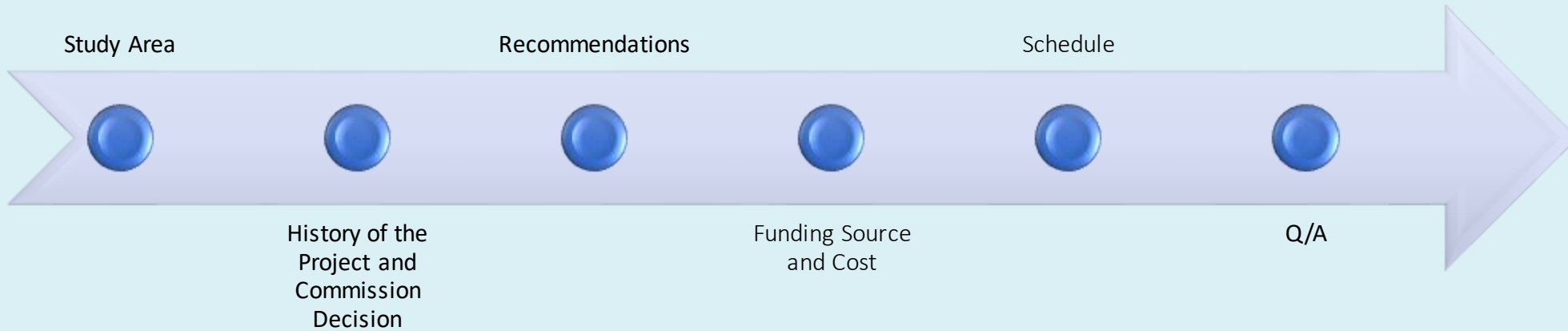
G.O. Bond Project # 42

Updated Presentation to Normandy Isle Neighborhood
January 10, 2023



YOUR VOICE, IN ACTION!

Presentation Agenda





YOUR VOICE, IN ACTION!



John F Kennedy
Causeway
FL-934

71st ST
FL-934





YOUR VOICE, IN ACTION!

G.O. Bond Process & Commission Resolution

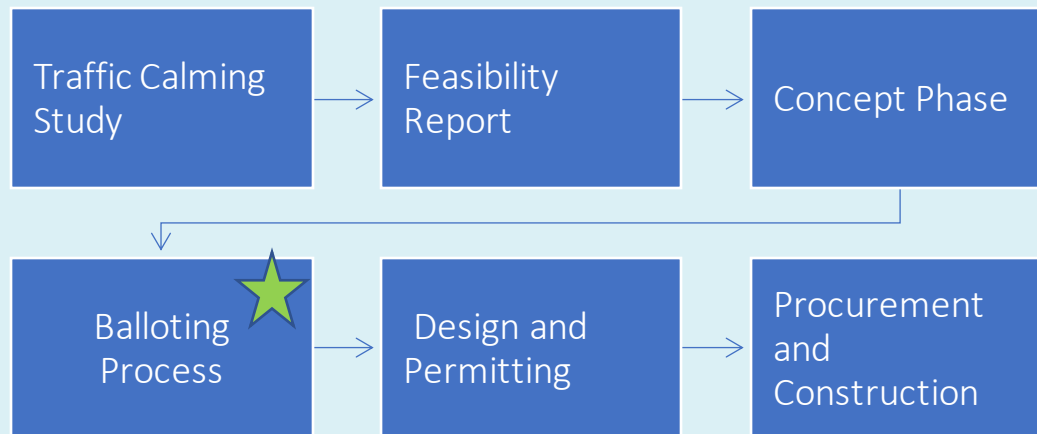
- The Normandy Isle Neighborhood was selected from various neighborhoods to be included in the Traffic Calming G.O. Bond program due to its geographic conditions, street characteristics, and multi-modal needs.
- Project approved by G.O. Bond Advisory Committee, City Commission, and subsequently by the voters in 2018.





YOUR VOICE, IN ACTION!

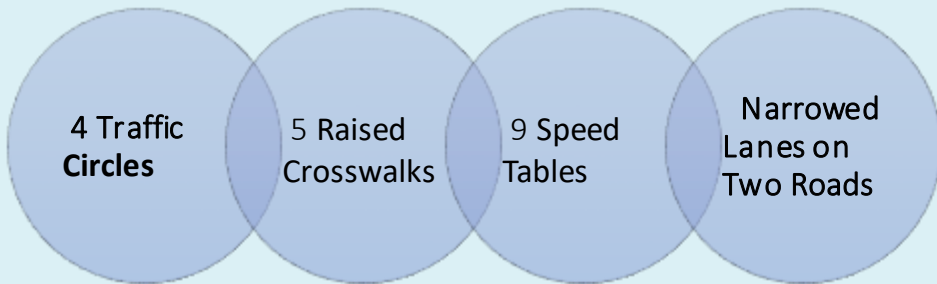
Project Methodology





YOUR VOICE, IN ACTION!

Recommendations





YOUR VOICE, IN ACTION!

Bay Drive



YOUR VOICE, IN ACTION!

Bay Drive (25 MPH)

- Characteristic: One-way with angled parking on one side and parallel parking on the other
- Certain segments have travel lane width of 12'
- Proposed improvements must have minimal impact to parking inventory
- Proposed Improvements: Construct speed tables, raised crosswalks, and add pavement marking to narrow the one-way lane from 20' to 15'

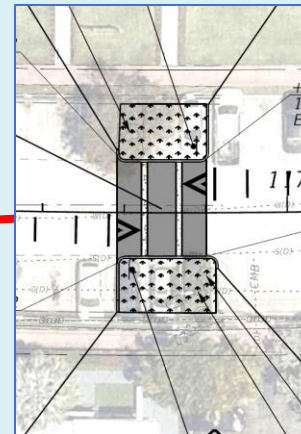
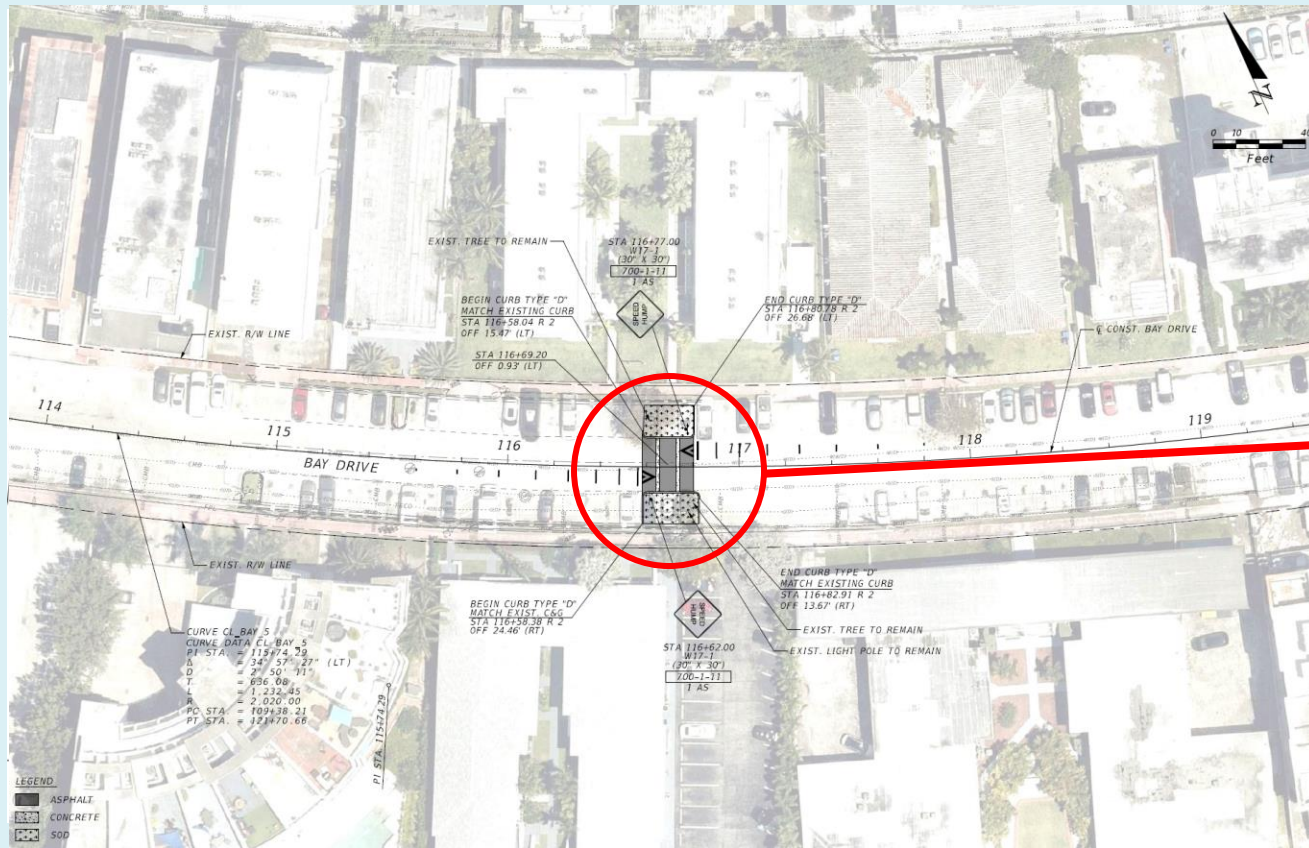




YOUR VOICE, IN ACTION!

Speed Table

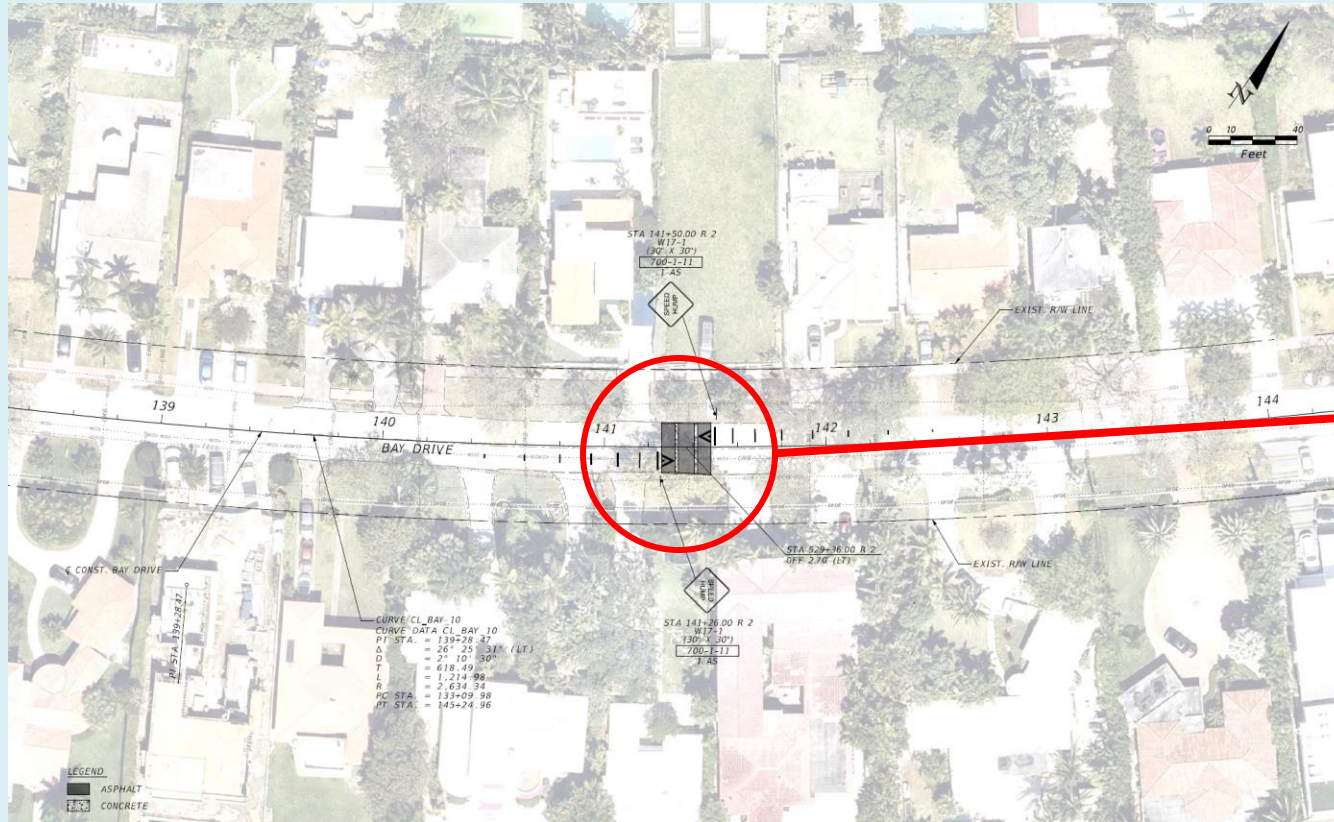
2000 Bay Drive





YOUR VOICE, IN ACTION!

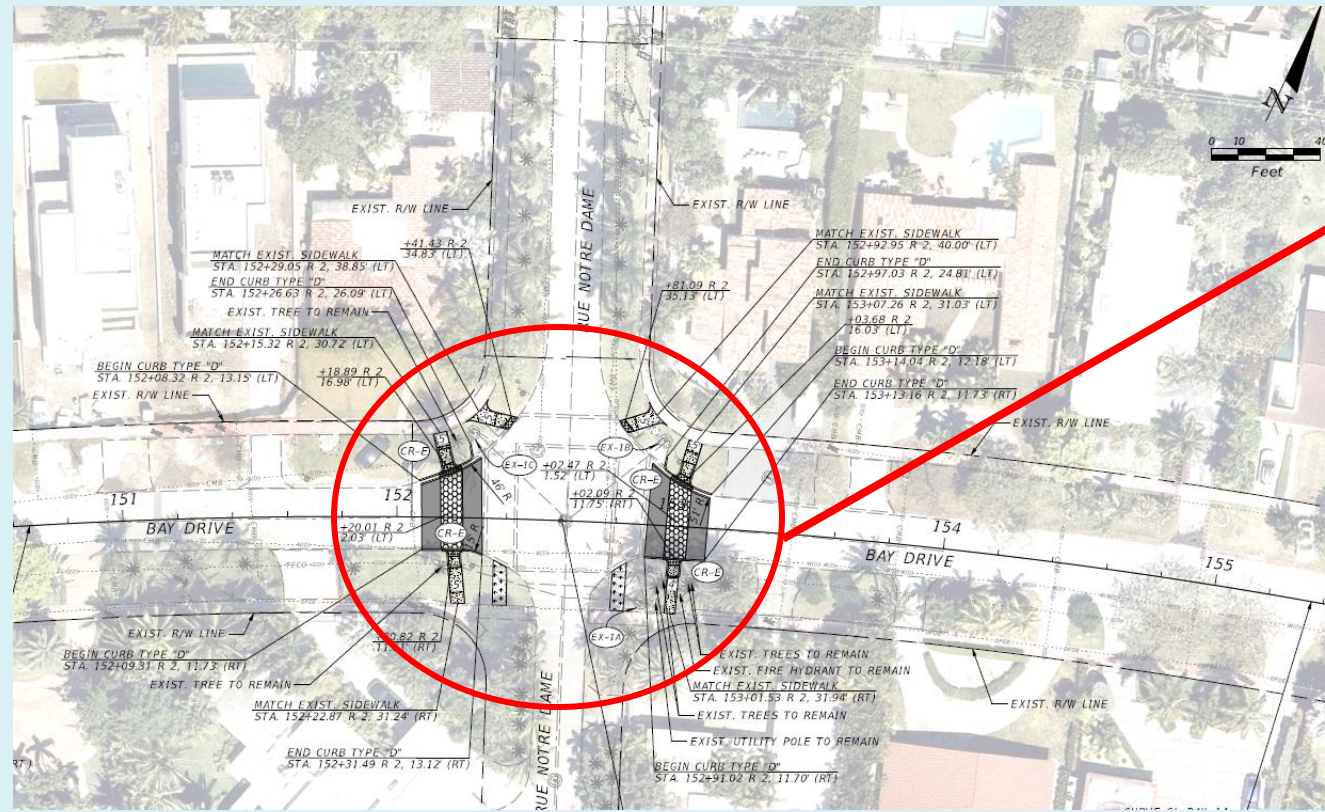
Speed Table
1570 Bay Drive





YOUR VOICE, IN ACTION!

Raised Crosswalk
Bay Drive / Rue Notre Dame

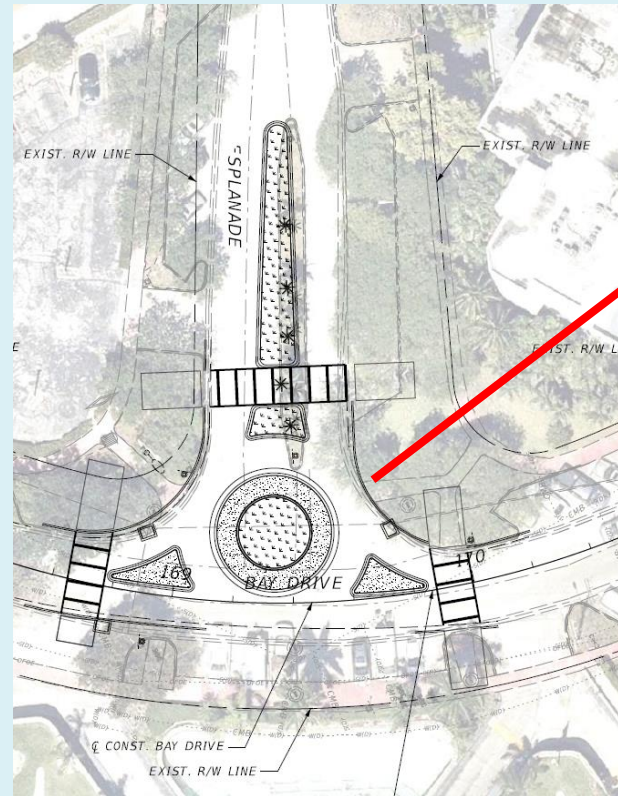
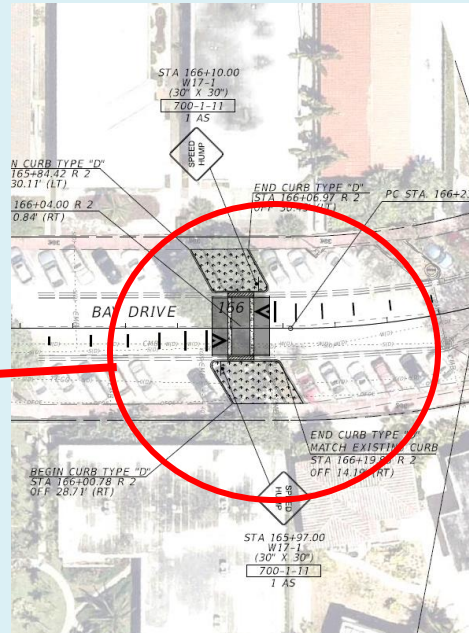


**Speed Table and Traffic Circle
Bay Drive / Brest Esplanade**

- Reduction in Speed
- Loss of Parking



Example



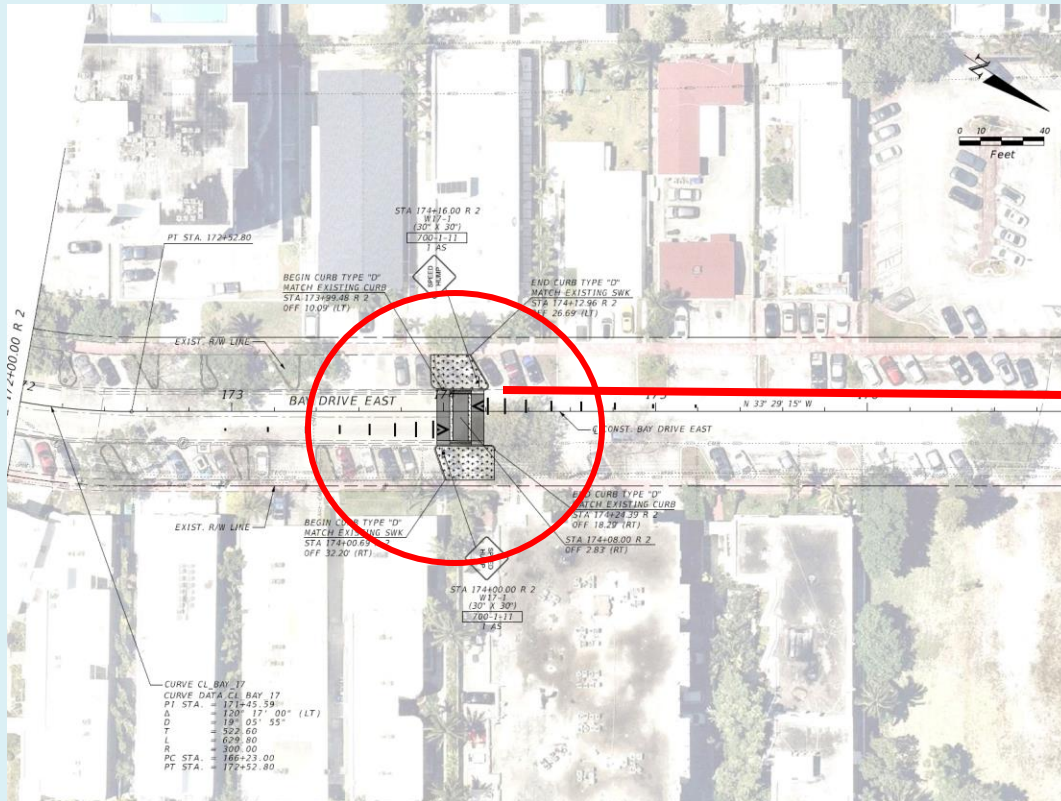
Example



YOUR VOICE, IN ACTION!

Speed Table

6905 Bay Drive



Example



YOUR VOICE, IN ACTION!

Biarritz Drive



YOUR VOICE, IN ACTION!

Biarritz Drive (25 MPH)

- Existing Conditions: Segments include on-street 90° parking on south side
- High parking utilization
- Corridor divided in 3 segments with cul-de-sacs to reduce cut-through traffic
- Segments have 12' wide lanes
- Design: It is important to implement traffic calming devices entering from 71st Street to convey the intended message of reduced speeds



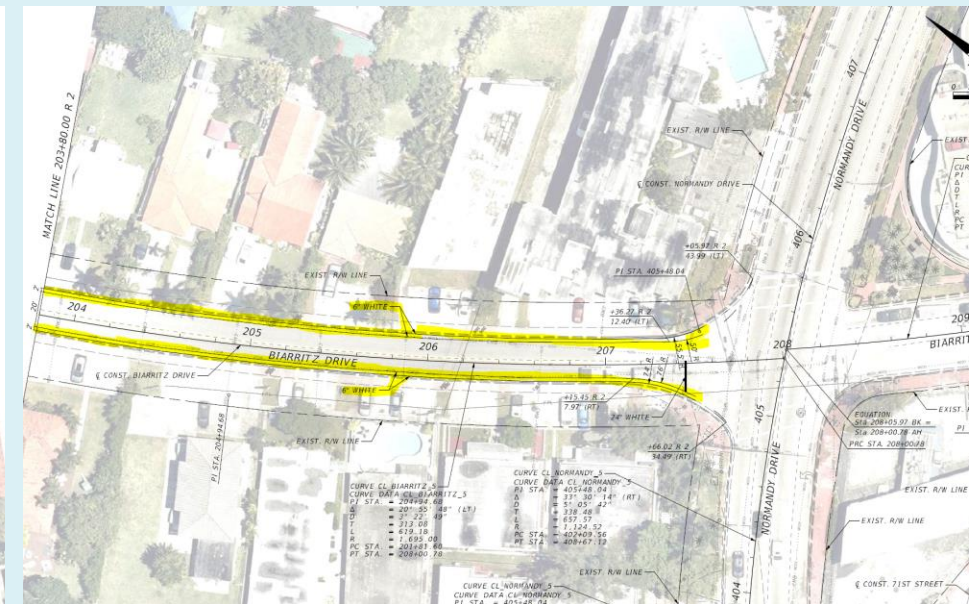
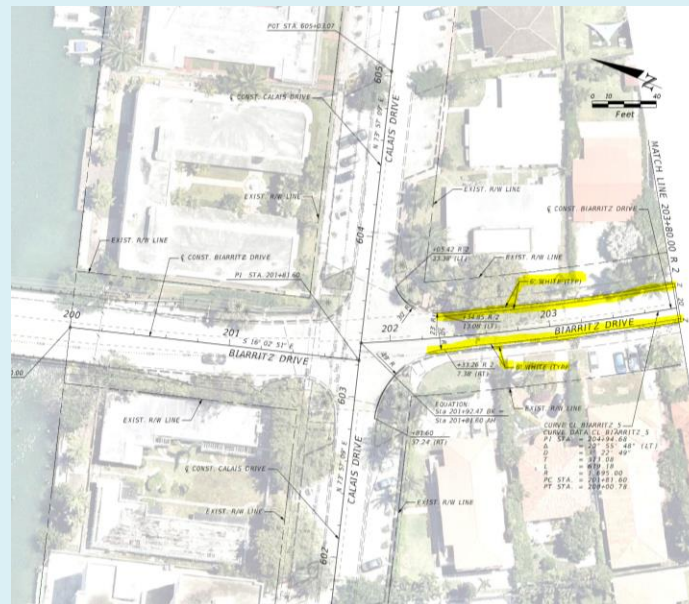


YOUR VOICE, IN ACTION!

Biarritz Dr

Narrowing Between Calais Dr & Normandy Dr

- Proposed Improvements:
Add pavement marking to narrow one-way travel lane from 24' to 20' to reduce speeds, calm traffic, and minimize crashes

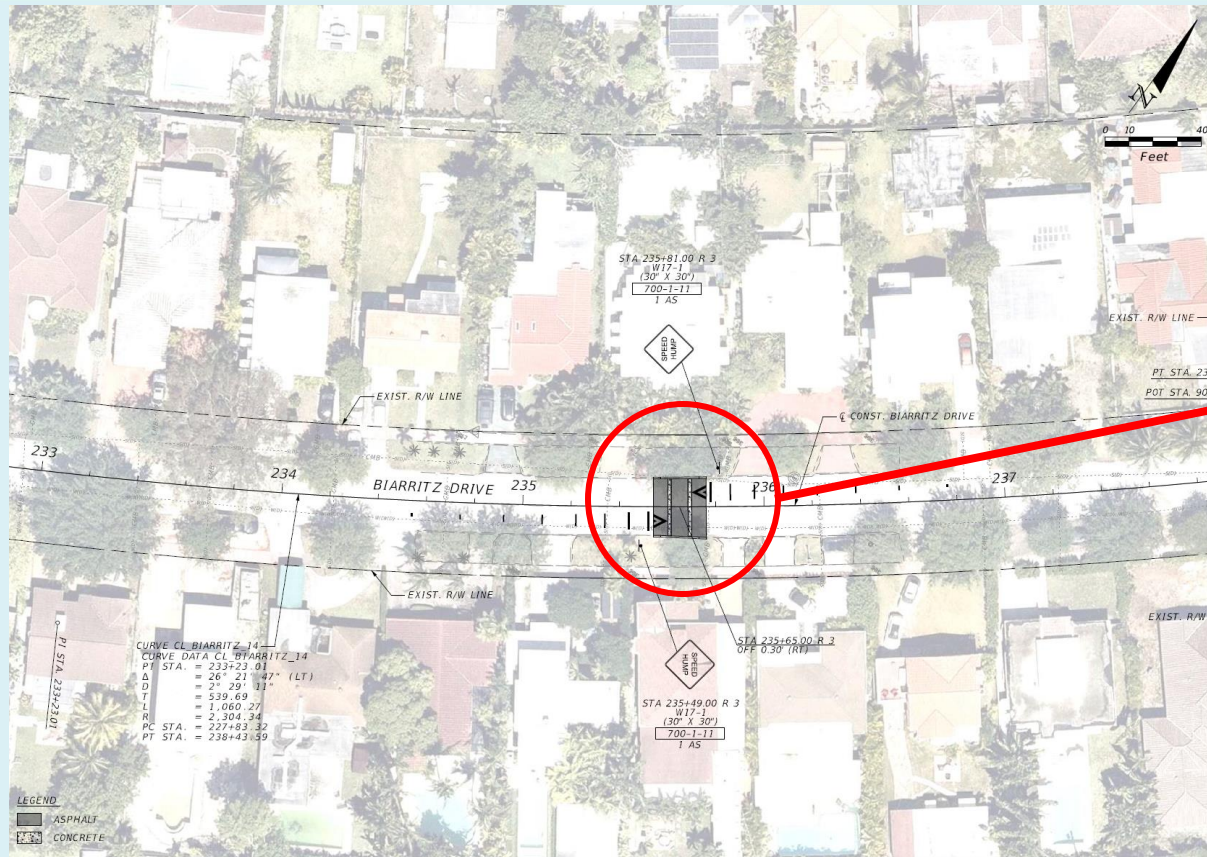




YOUR VOICE, IN ACTION!

Speed Table

1545 Biarritz Dr





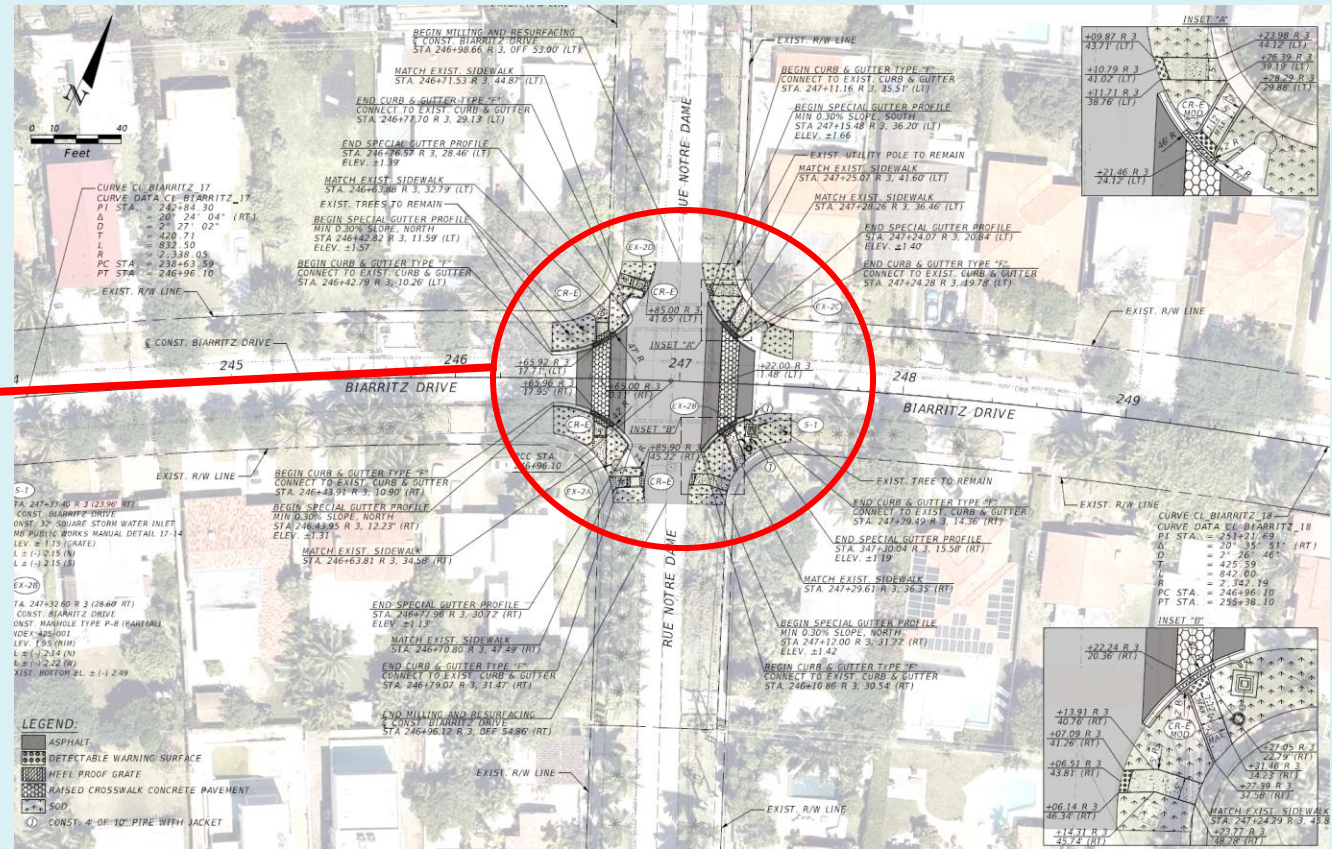
YOUR VOICE, IN ACTION!

Raised Crosswalk

Biarritz Dr / Rue Notre Dame



Example





YOUR VOICE, IN ACTION!

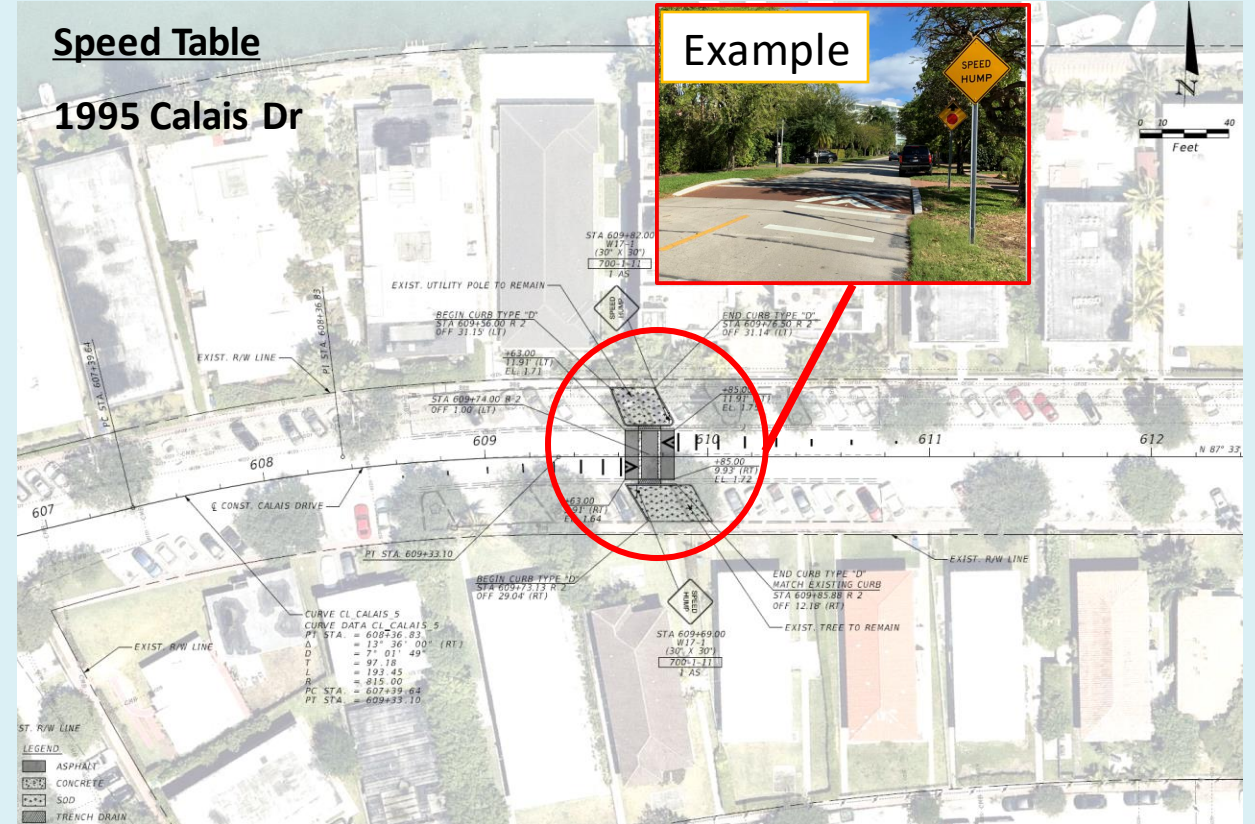
Calais Drive



YOUR VOICE, IN ACTION!

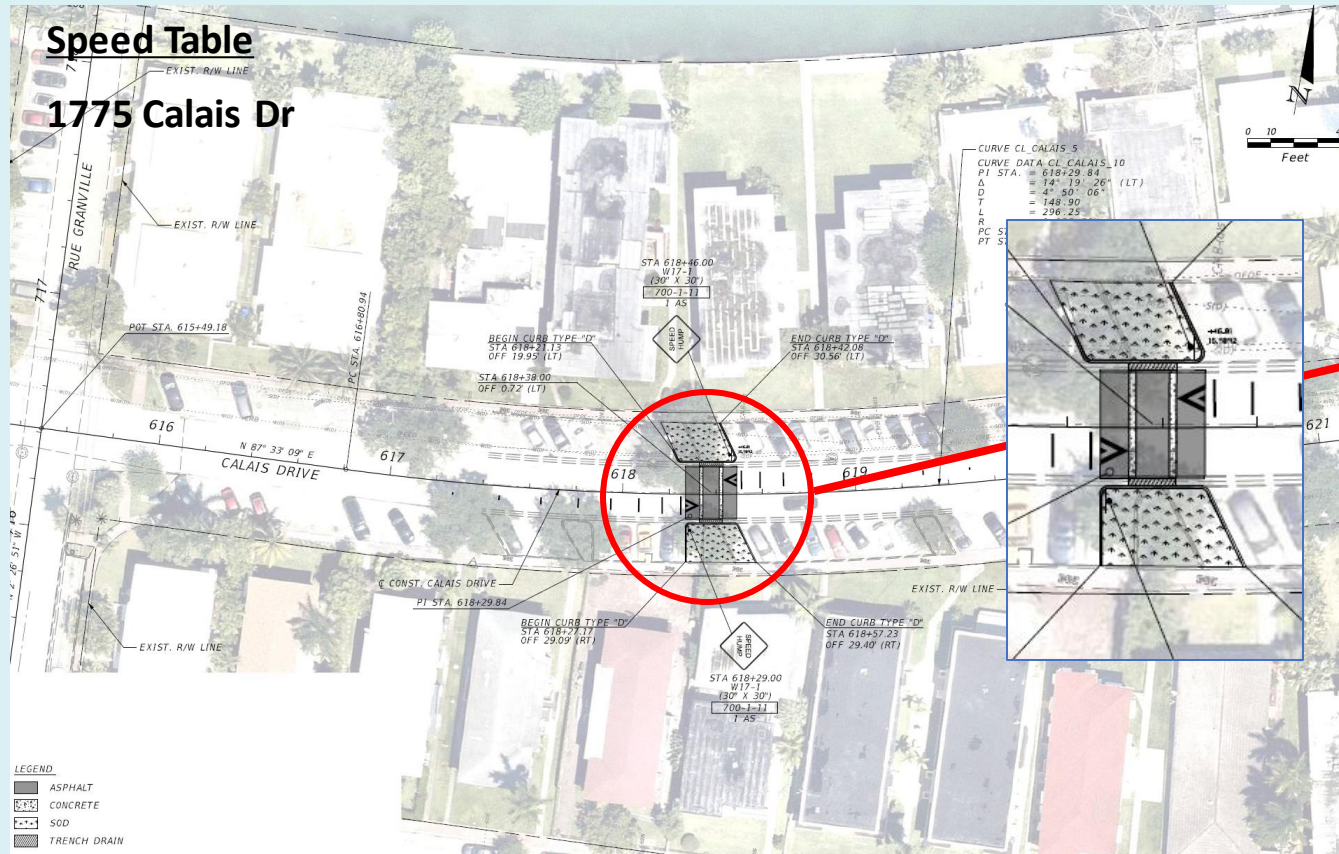
Calais Drive (25 MPH)

- Two-way road with angled parking
- Parking utilization is high - proposed improvements must have minimal impact to parking
- Speeding occurs in the center segment of the corridor because there is no intersection control
- Proposed Improvements: Speed tables





YOUR VOICE, IN ACTION!



Example



YOUR VOICE, IN ACTION!

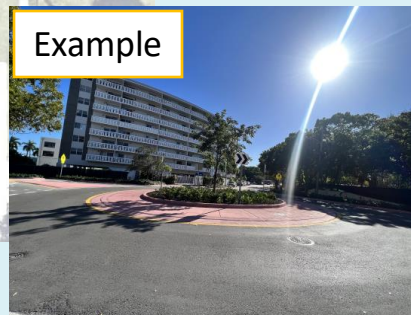
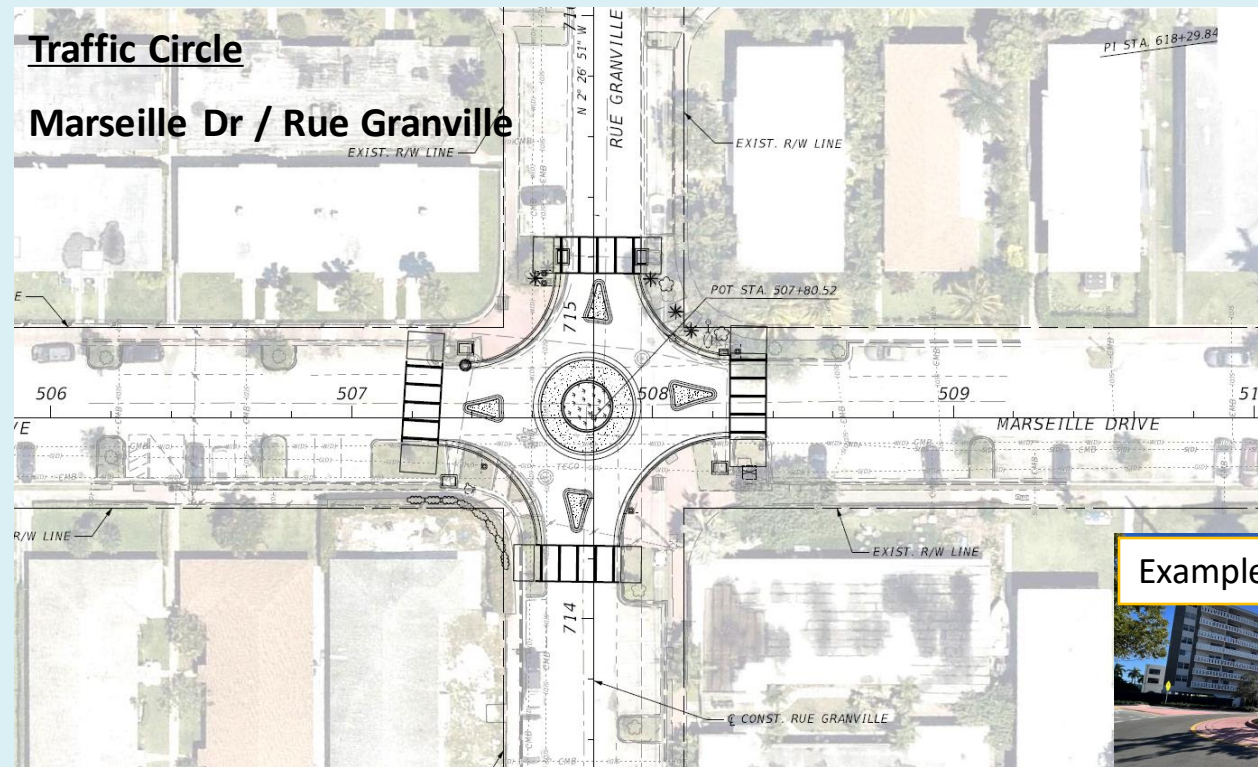
Marseille Drive



YOUR VOICE, IN ACTION!

Marseille Drive (25 MPH)

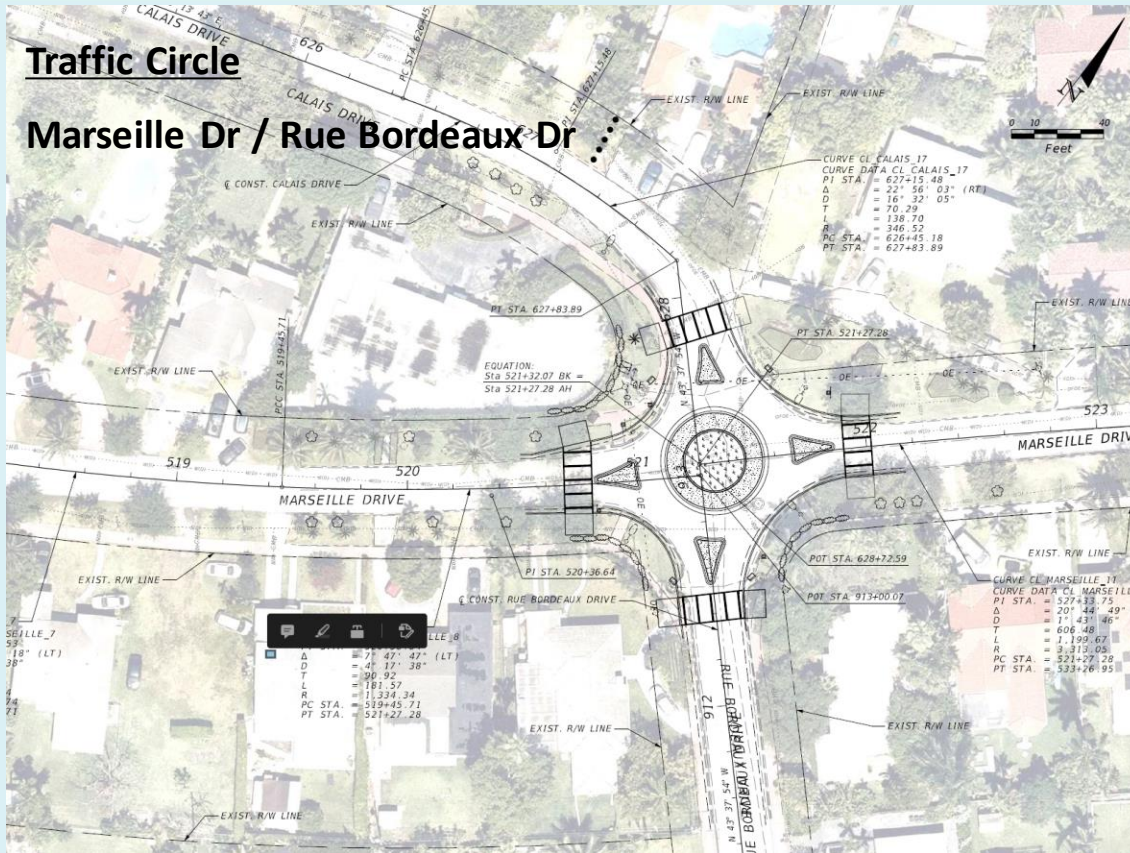
- Two-way road with angled parking
- Parking utilization is high - proposed improvements must have minimal impact to parking
- Speeding occurs in the center segment of the corridor due to long distance between intersections
- Proposed Improvements: Speed tables, raised crosswalks, and traffic circles



Example

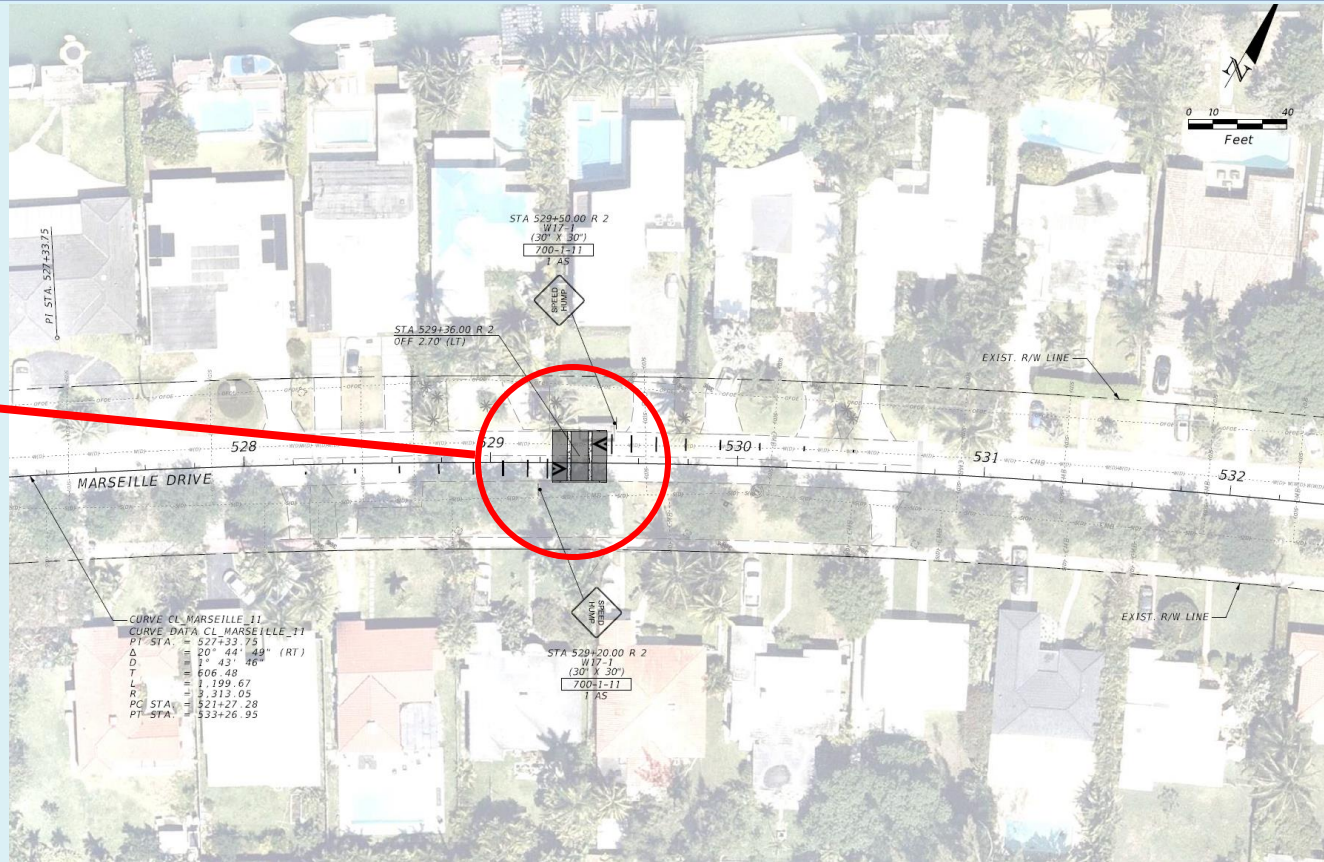


YOUR VOICE, IN ACTION!



Speed Table

Marseille Dr / Rue Notre Dame

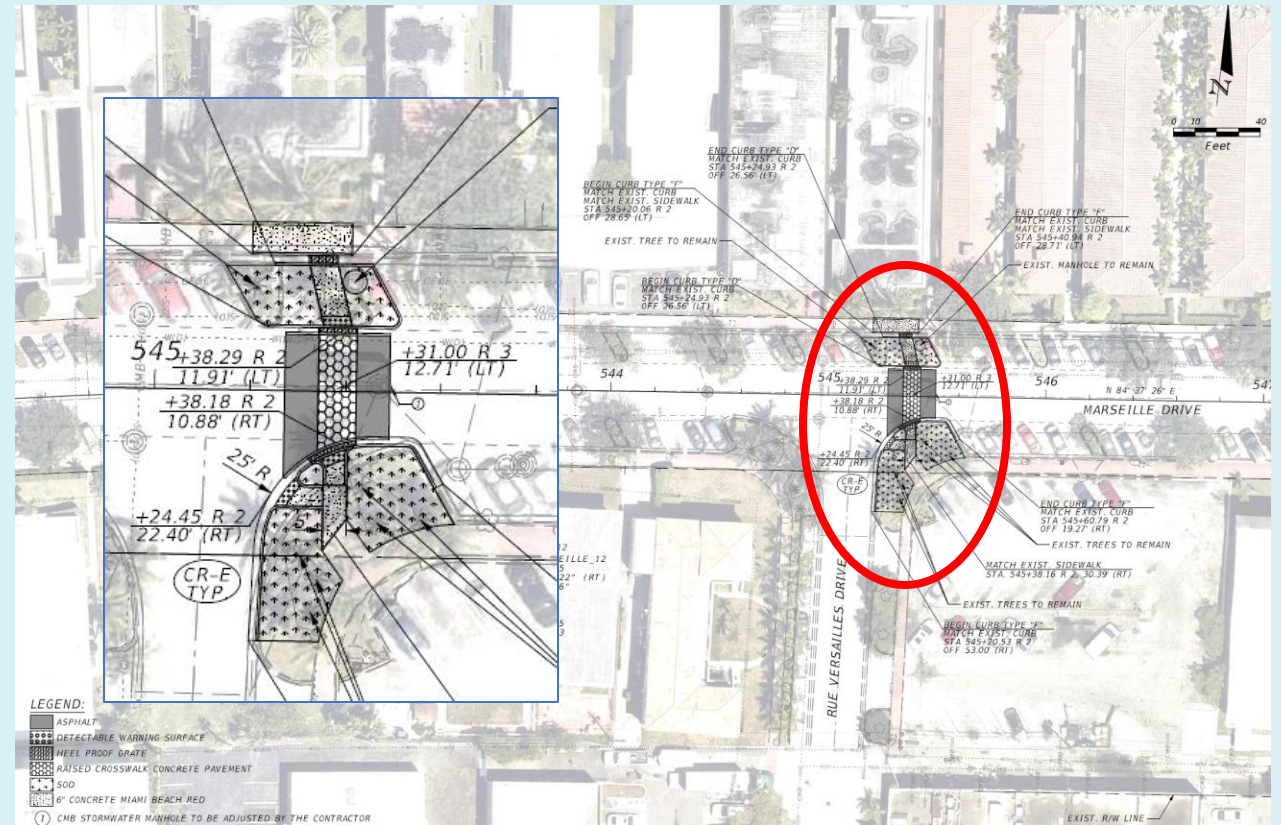




YOUR VOICE, IN ACTION!

Raised Crosswalks

Marseille Dr / Rue Versailles Dr





YOUR VOICE, IN ACTION!

Marseille Dr and Bay Dr Intersection

- No crosswalks for pedestrians in the area
- Field observation video taken at this intersection to document driver compliance with current control conditions
- Compliance found to be low
- Speeding identified on north-south direction

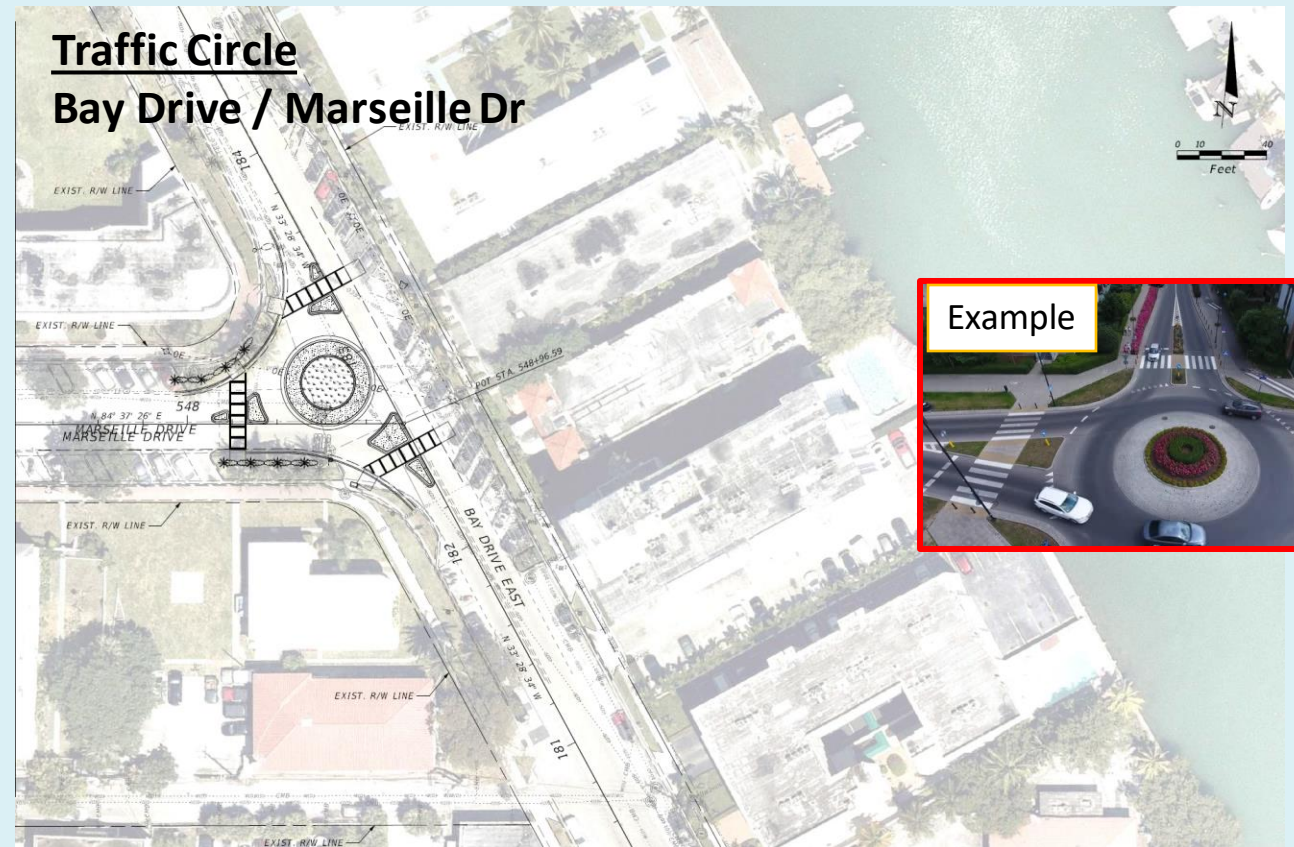




YOUR VOICE, IN ACTION!

Proposed Reconfiguration

- Improves circulation at the intersection with the implementation of a neighborhood traffic circle
- Introduces pedestrian crosswalks which do not exist currently
- Introduces traffic calming
- Significant loss of parking spaces





YOUR VOICE, IN ACTION!

Project Funding and Cost

Project is funded by G.O. Bond funds and other funding sources.

An Opinion of Probable Cost is currently being finalized for the proposed improvements based on current market costs for similar projects in Miami Beach.





YOUR VOICE, IN ACTION!

Schedule

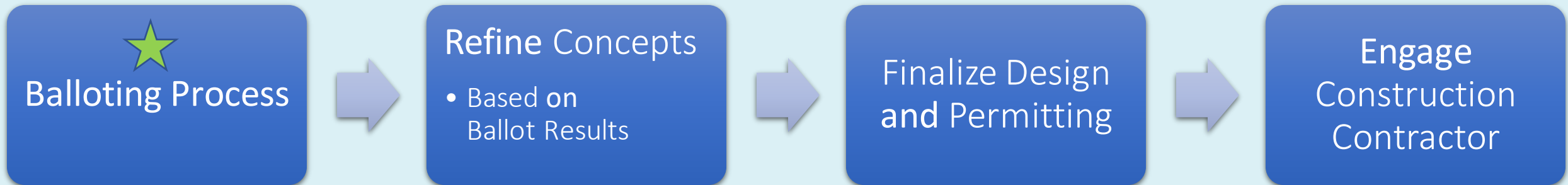
- Finalize Design – Sept 2023
- Begin Construction – Jan 2024
- Finalize Construction – Oct 2024





YOUR VOICE, IN ACTION!

Key Next Steps





YOUR VOICE, IN ACTION!



For more information, please contact
Dexter Peralta at
dexterperalta@miamibeachfl.gov