



City of Miami Beach

KEY BENEFITS FOR COUNTY RESIDENTS

Improved Weekday Accessibility

- The number of residents near more frequent bus service (15 minute or better) will double on weekdays, increasing from 380,000 residents (14%) to 814,00 (30%).
- 150,000 more jobs will be within walking distance of more frequent transit service, increasing jobs near frequent service from 326,000 (29%) to 478,000 (43%).
- Lower wage jobs near 10 minute or better service doubles, from 9% of low wage jobs in the existing network to 18% in the BBN.
- The number of minority residents near frequent transit more than doubles, increasing from 13% to 30%.
- BBN brings frequent transit service to more than a quarter million low-income residents, more than double the 119,000 who are near frequent transit today.
- BBN brings frequent service near almost 60% of households without cars; that's 20,000 additional households without cars near more frequent bus service.
- The number of African-American/Black residents near frequent bus service nearly quadruples with BBN, from only 43,000 today to nearly 169,000.

More Weekend Accessibility

- BBN will more than double the number of low-wage jobs that are near frequent bus service on Saturdays, from 17% today to 42%.
- With the BBN, the percent of minority residents near frequent service on Saturdays will increase from 5% to 29%.
- Low-income residents near frequent service on Saturdays will increase more than six times, from only 40,000 today to more than 256,000 in the BBN.
- Zero-car households near frequent service on Saturdays will nearly triple, from only 19% today to over 57% with the BBN.
- Fewer than 20,000 African-American/Black residents (5%) are near frequent service on Saturdays today. BBN will increase this by eight times, to more than 166,000 (41%).

City of Miami Beach

KEY FEEDBACK RECEIVED DURING OUTREACH

- Outreach to seniors in Miami Beach.
 - Outreach conducted with Senior Affairs Committee and housing centers.
- City wants a County-funded on-demand solution for Route 115 (Alton Rd).
 - DTPW is working with the City to supplement the existing Freebee service.

SERVICE IMPROVEMENTS

- 14 – New 30 min service from Mt. Sinai to Omni every 30 min.
- 20 – New 15 min service from MIA to Miami Beach via Alton Rd.
- 36 - Extended to Miami Beach with 15 min all day service east of Le Jeune. Truncated in Doral. Deviated to serve new Jackson West Campus.
- A (BBN 15) - All day service along the Venetian Causeway and extended to Washington Ave.
- L (BBN 79) - One-seat-ride to Lincoln/Washington, midday frequency from 30 to 15 min to Hialeah Station, peak frequency from 12 to 15 min
- S/120 (New 100) – Similar to route 120 alignment, bypasses Omni terminal and bus stops north of 186 St in Sunny Isles Beach. All-day frequency 7.5 min to Haulover and 15 min to Aventura. (20, 100 and MetroConnect)

SERVICE CHANGES

- 150 – Reduced from 20 the 30 minutes seven days a week.
- No changes – 79 Max (Renumbered 279),
- Discontinued – J (14, 36, 100, 150, Miami Beach Trolley and Freebee), M (14, 20 and MetroConnect), 115 (14, 15, 20, 36, 79, 100 Miami Beach Trolley and Freebee), 241 (14, 36, Miami Beach Trolley and Freebee)

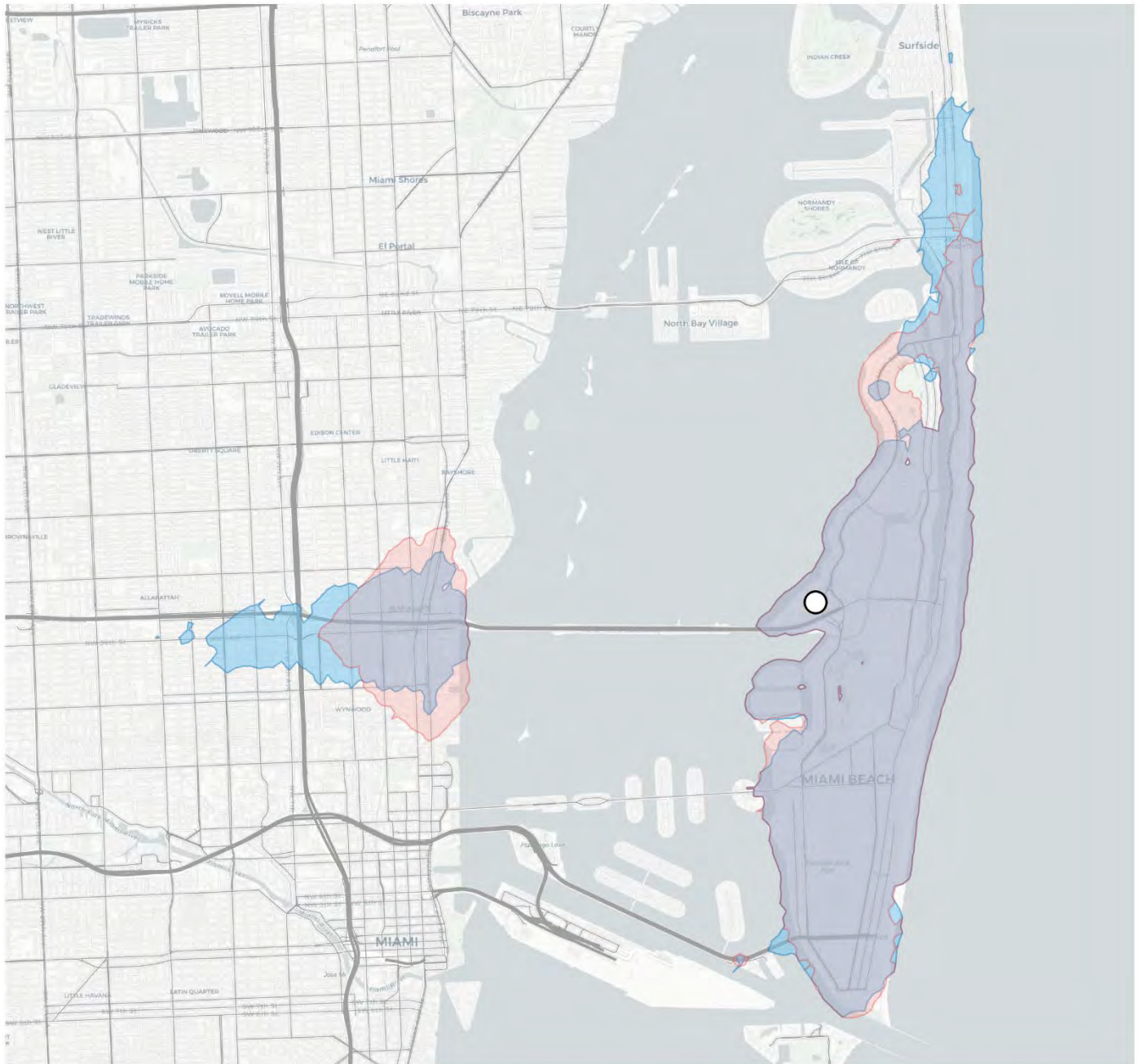
City of Miami Beach

How far can I travel from

Mt. Sinai Hospital

in 45 minutes...

Better Bus Network



Change in opportunities (jobs and services) reachable:	-2,855	(-5%)
---	---------------	--------------

Change in residents reachable:	+6,060	(+10%)
---------------------------------------	---------------	---------------

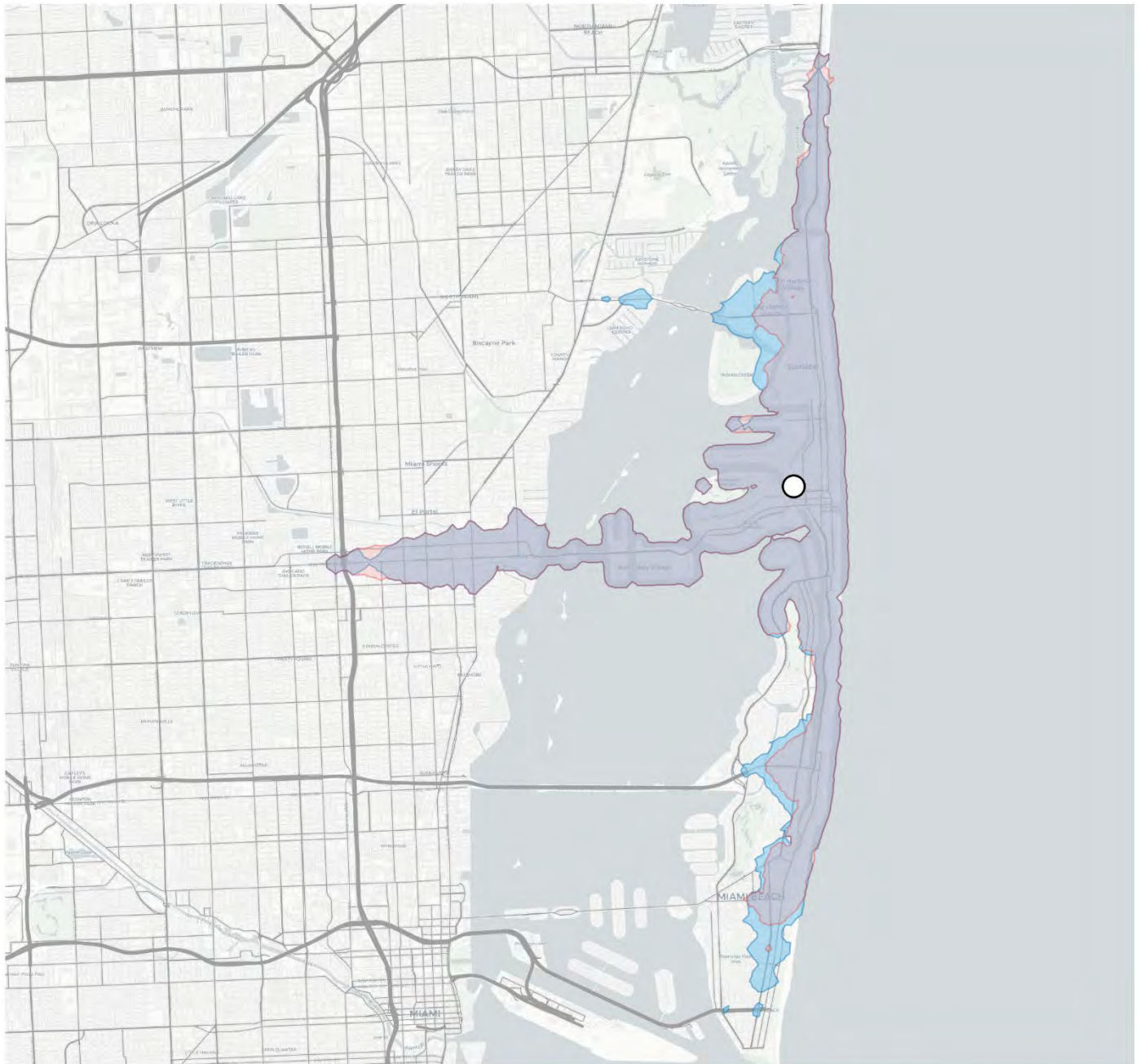
City of Miami Beach

How far can I travel from

North Beach Bandshell

in 45 minutes...

Better Bus Network



Change in opportunities (jobs and services) reachable:	+5,850	(+20%)
---	---------------	---------------

Change in residents reachable:	+7,570	(+10%)
---------------------------------------	---------------	---------------

City of Miami Beach

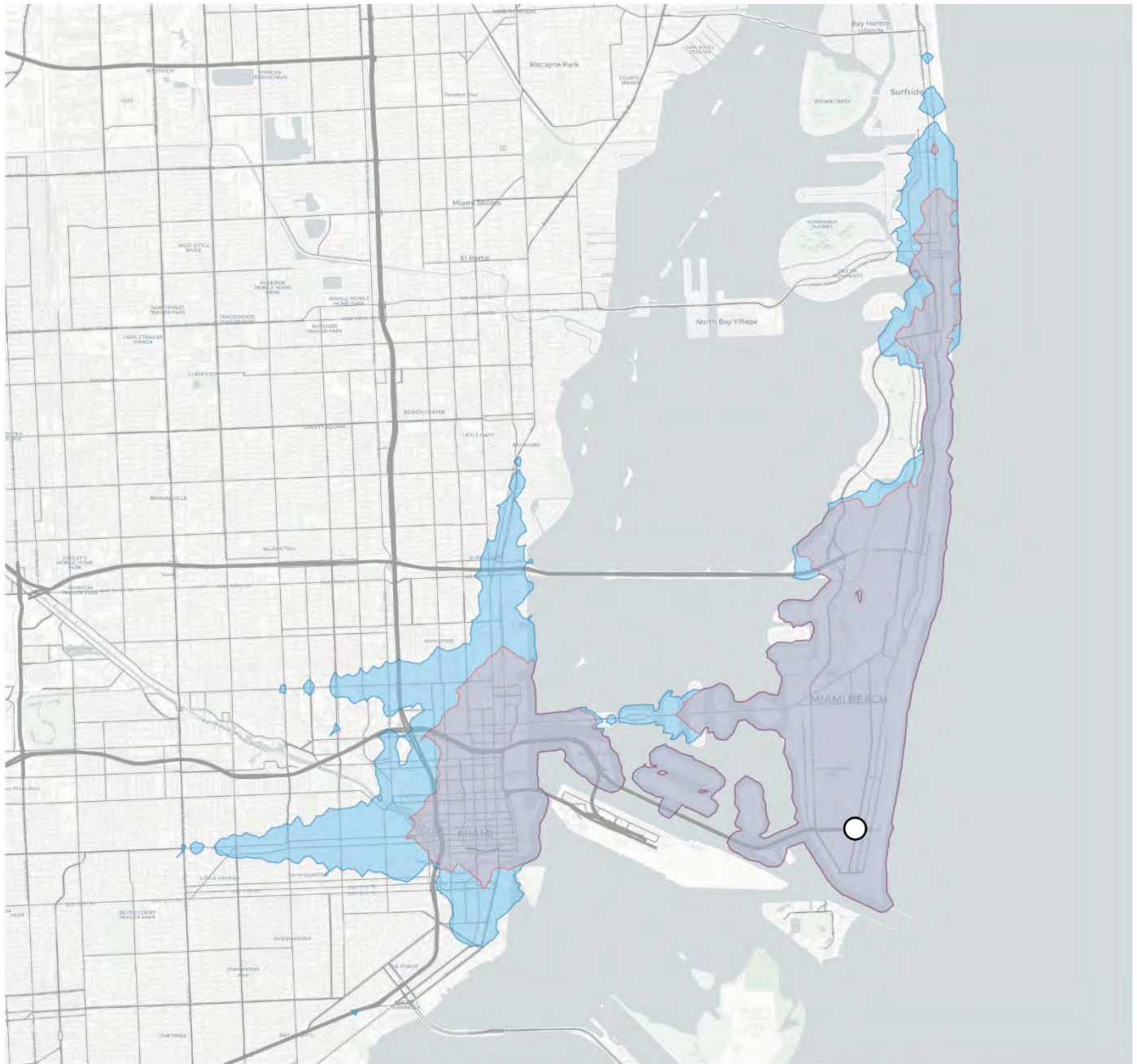
How far can I travel from

South Beach - Washington and 5th St

in 45 minutes...



Better Bus Network



Change in opportunities (jobs and services) reachable: +45,880 (+25%)

Change in residents reachable: +73,725 (+80%)

City of Miami Beach

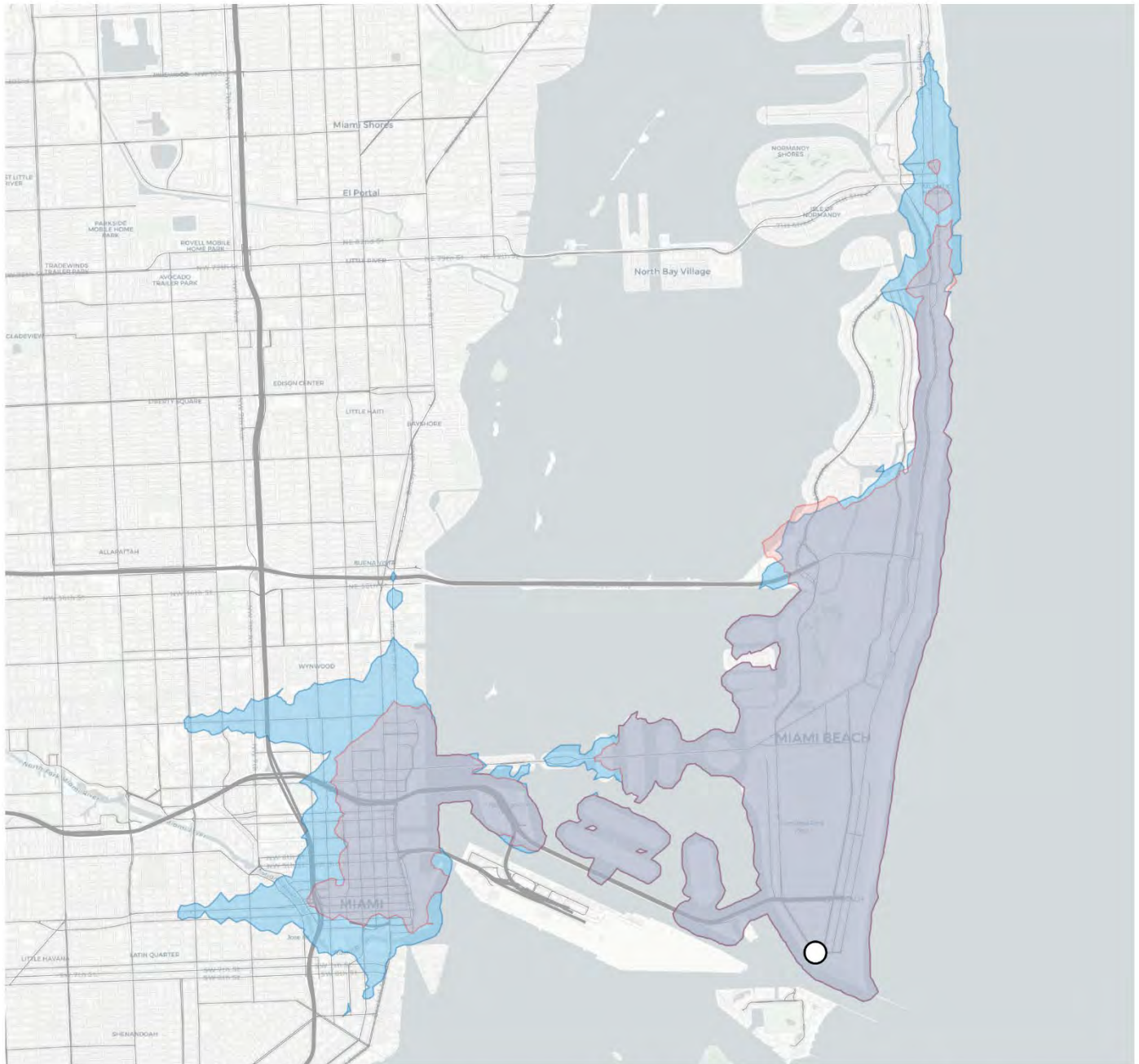
How far can I travel from

Washington Ave and South Pointe Dr

in 45 minutes...



Better Bus Network



Change in opportunities (jobs and services) reachable:	+62,145	(+50%)
---	----------------	---------------

Change in residents reachable:	+29,595	(+40%)
---------------------------------------	----------------	---------------

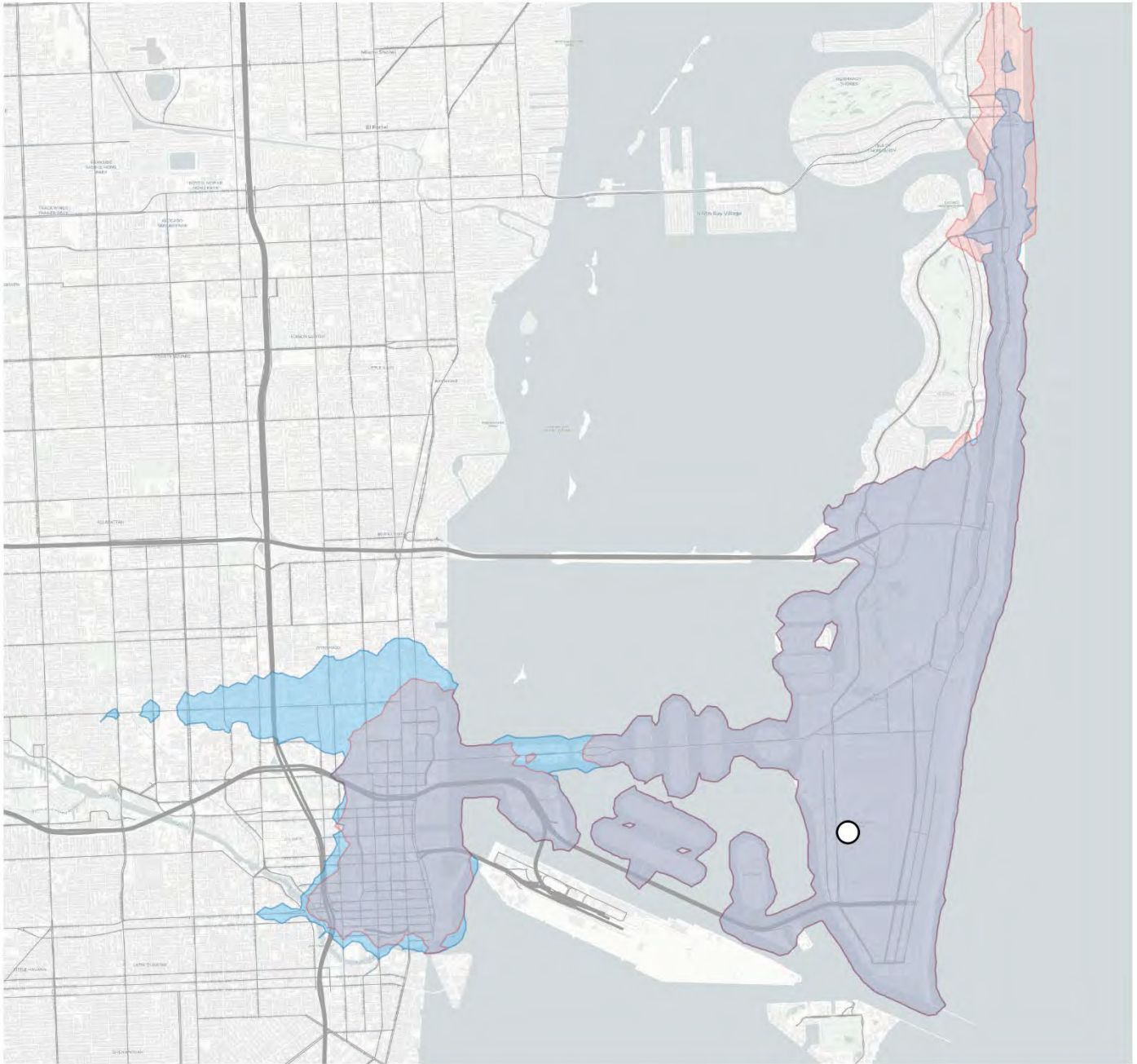
City of Miami Beach

How far can I travel from

11th and Jefferson

in 45 minutes...

Better Bus Network



Change in opportunities (jobs and services) reachable:	+24,130	(+15%)
---	----------------	---------------

Change in residents reachable:	+5,940	(+5%)
---------------------------------------	---------------	--------------

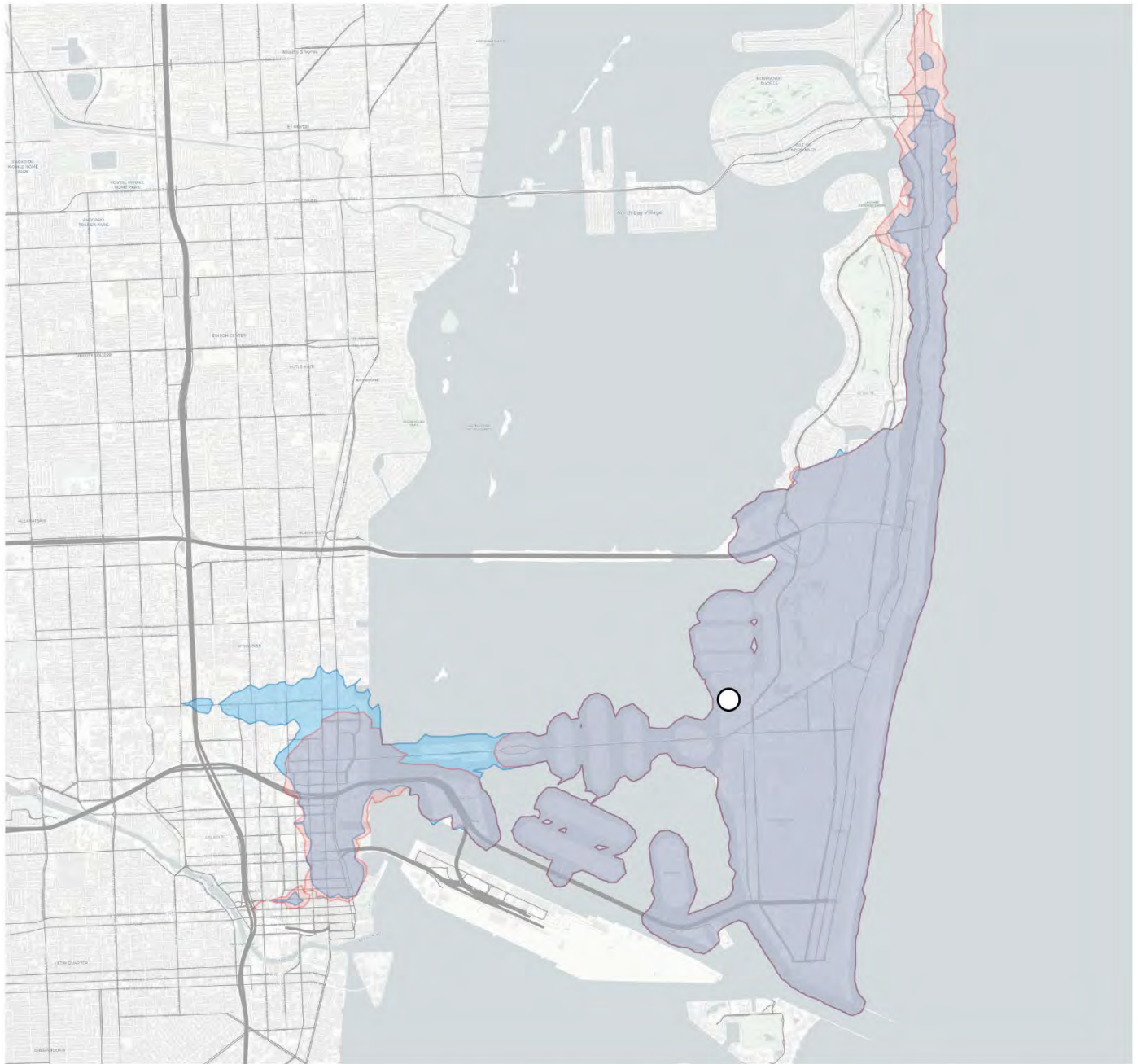
City of Miami Beach

How far can I travel from

20th and West Ave

in 45 minutes...

Better Bus Network



Change in opportunities (jobs and services) reachable:	+20,870	(+25%)
---	----------------	---------------

Change in residents reachable:	+1,225	(+0%)
---------------------------------------	---------------	--------------

City of Miami Beach

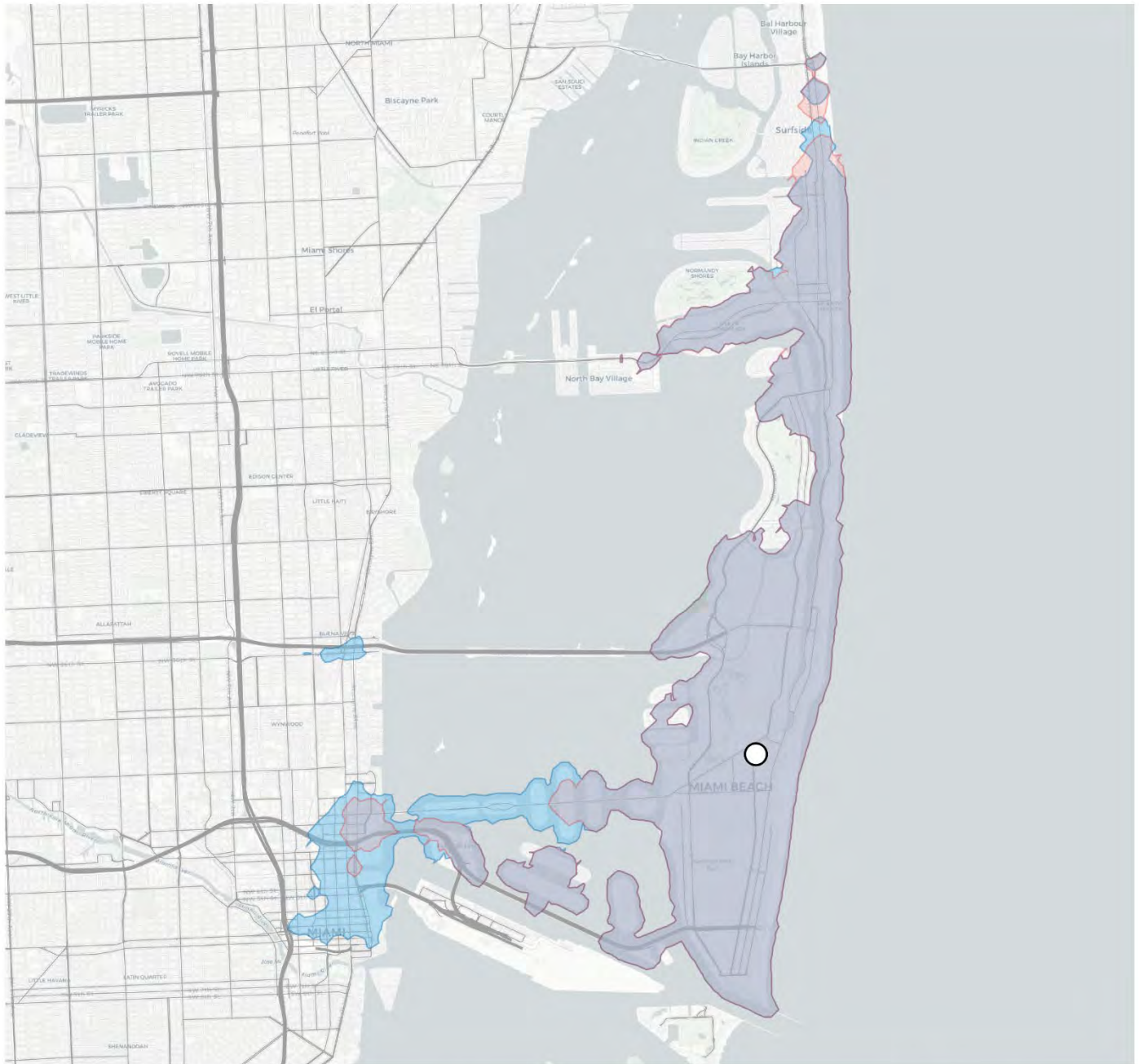
How far can I travel from

Collins Park, 21st and Park Ave

in 45 minutes...



Better Bus Network



Change in opportunities (jobs and services) reachable:	+43,740	(+80%)
---	----------------	---------------

Change in residents reachable:	+11,820	(+15%)
---------------------------------------	----------------	---------------

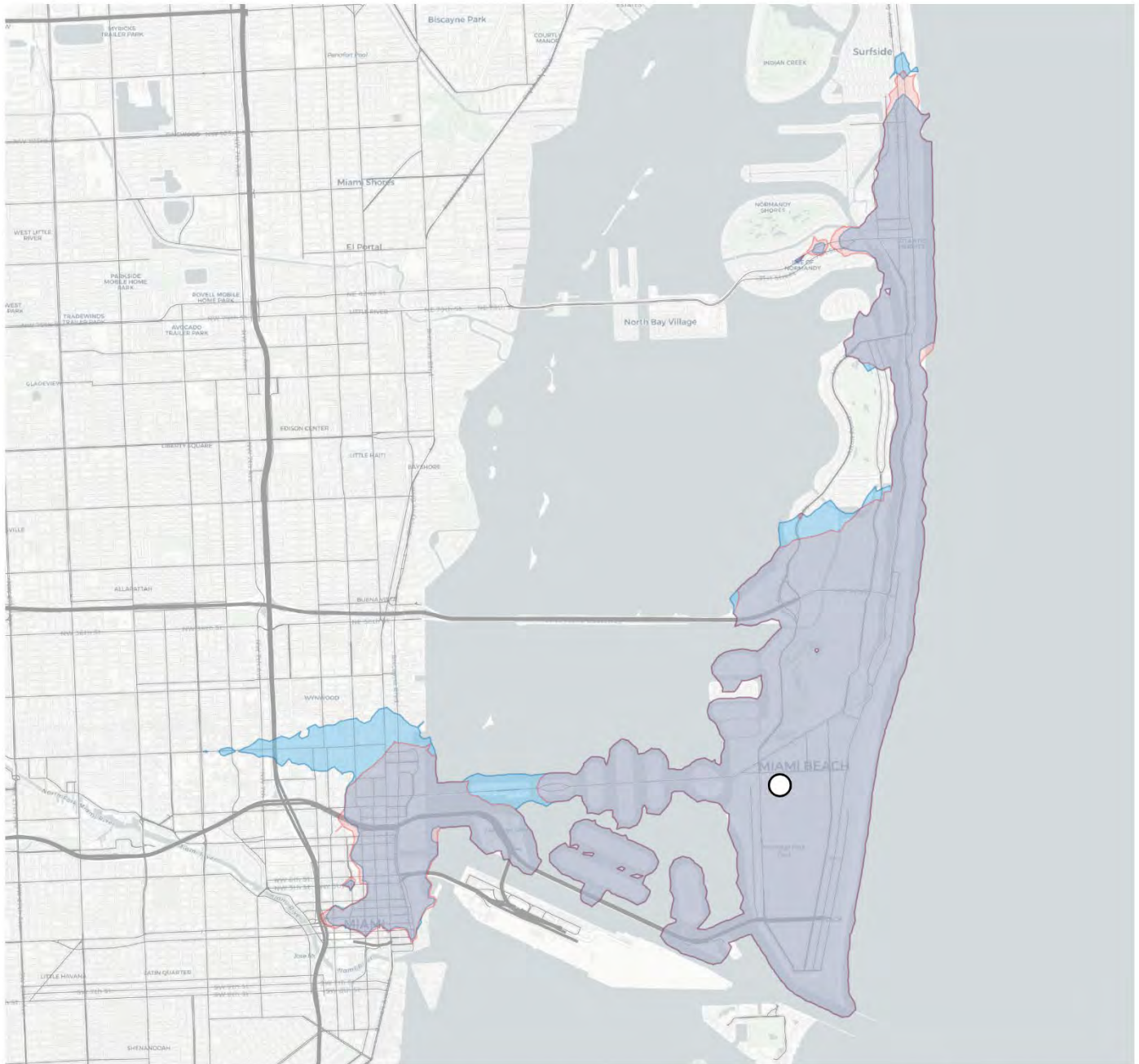
City of Miami Beach

How far can I travel from

Lincoln Road and Meridian Ave

in 45 minutes...

Better Bus Network



Change in opportunities (jobs and services) reachable:	+20,725	(+20%)
---	----------------	---------------

Change in residents reachable:	+3,365	(+5%)
---------------------------------------	---------------	--------------

City of Miami Beach

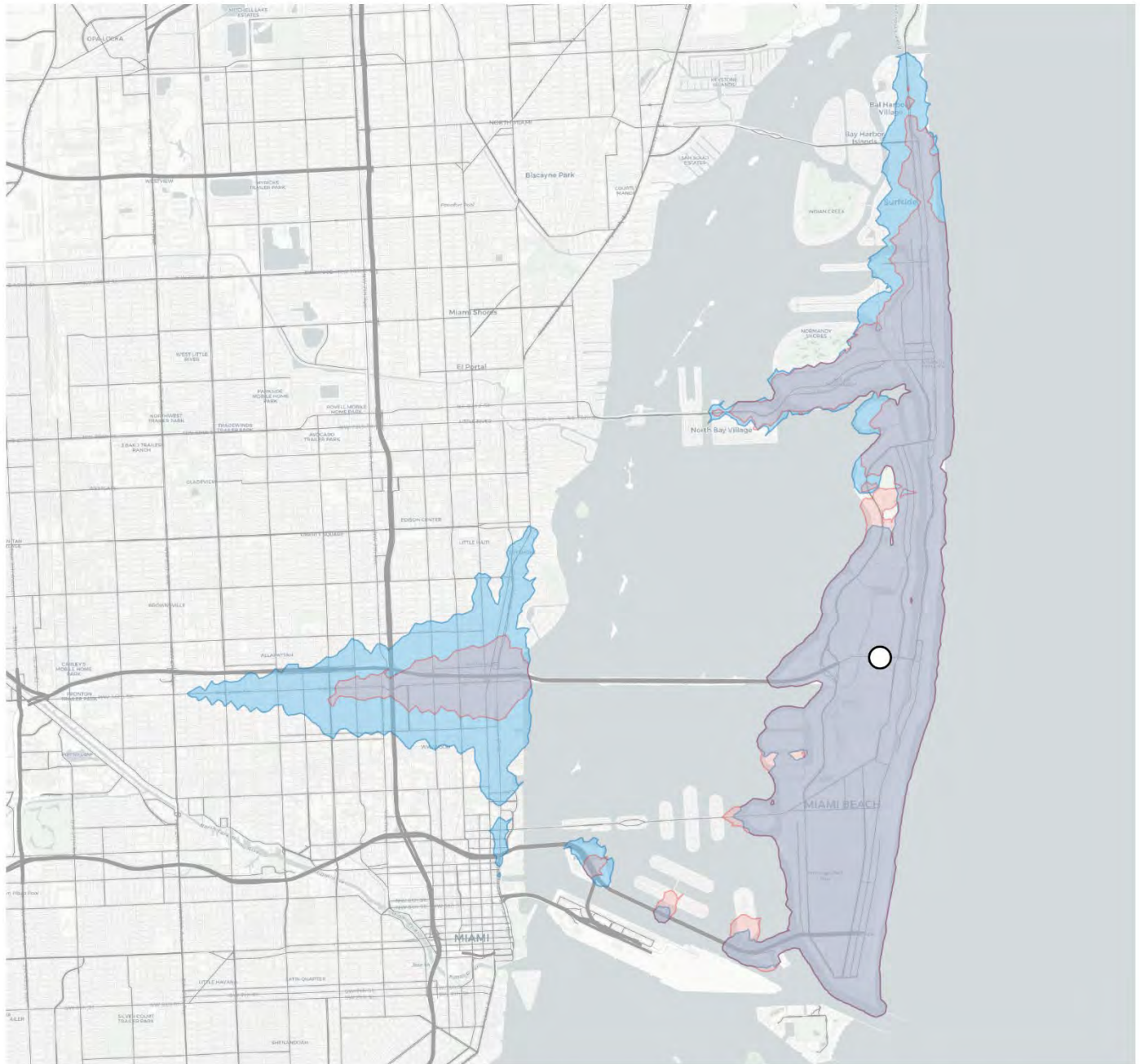
How far can I travel from

Mid-Beach 41st and Royal Palm Ave

in 45 minutes...



Better Bus Network



Change in opportunities (jobs and services) reachable:	+25,410	(+45%)
---	----------------	---------------

Change in residents reachable:	+33,390	(+35%)
---------------------------------------	----------------	---------------